

From Its Abundance, New Moon by New Moon You Shall Keep



Isaiah 66:22-23

Discover in the context of this *interlinear* Hebrew word study that the true New Moon lunar phase is revealed in four ways as four separate, yet cohesive witnesses. **Ascertain the ageless protocol Yahuah's obedient followers are to use to locate their Sabbaths currently and into eternity.** Remarkably, the time-keeping principles of the future reign of our Messiah are no different than those implemented at creation and remain perpetual today as they are synchronized between earth and the New Jerusalem by the true New Moon. For "According to its Abundance, New Moon by New Moon You Shall Keep - Isaiah 66:22-23.

For thousands of years the entire world has been spoon-fed artificial time measuring methods that are 180 degrees opposite of the ordained WAY OF THE MOST HIGH. This is further driven by the egregious changes made in all the translations of Scripture that serve to cover-up the **full moon** as the original New Moon of Creation and support whatever is fashionable among the Babylonians, Egyptians, Romans, and even the modern Jews. In spite of this, Yahuah's true followers, those who seek for truth with all their hearts and obey, will be restored and come forth triumphant from earth's dark pit of deception into His Kingdom and marvelous FULL LIGHT OF TRUTH.

Subject: From its Abundance—New Moon by New Moon
Scripture Verse: Isaiah 66:22-23
Author: Kerrie French

Word for Word Comparison

All word studies utilize two or more lexicon sources to ensure accuracy.

Missing words, overt errors in translation are highlighted in red.

** Represents a reversal of word order between a noun and its adjective.*

(P and S denote the prefix and suffix in the Hebrew text column.)

Hebrew is read from R – L, and the part underlined is the portion that perfectly matches the Strong's word choice, with the remainder as the prefix and suffix.

Strong's # Word Choice	KJV English Scripture Translation	Actual Interlinear Hebrew Text	Strong's Hebrew Definitions	Brown-Driver- Brigg's Hebrew Lexicon and TWOT	New Restored Text
Verse 22					
3588 כִּי kiy	For	כִּי kiy	and; as; assuredly; but; certainly; doubtless; even; except; for ; how; that; nevertheless; now; rightly; seeing; since; surely; then; therefore; while; yet;	that; for ; because; when; as though; as; because that; but; then; certainly; except; surely; since;	“For
834 אֲשֶׁר ka'asher	as	כֹּ אֲשֶׁר ka'asher (P: <u>as</u> ; like;)	who; which; what; that; also; when; where; how; in order that; because; <u>whereby</u> ;	which; who; that which; when; since; <u>as</u> ; if; for;	according as
8064 שָׁמַיִם ha shamayim	heavens	הַ שָׁמַיִם ha shamayim (P: <u>the</u>) (S: <u>plural</u>)	to be lofty; the sky; the visible arch in which the clouds move; the higher ether where the celestial bodies revolve;	<u>heaven; heavens</u> ; sky; visible heavens, <u>as abode of the stars</u> ; the visible universe; atmosphere; <u>heaven</u> (as the abode of God)	the shamayim (starry abode),
2319 חֹדֶשׁ ha chadash yim	the new	חֹדֶשׁ יָמִים ha chadash yim OR Same Hebrew Word: חֹדֶשׁ יָמִים #2320 ha chodeshyim	new; fresh; new thing; #2320 - the New Moon ; by implication, a month; month; new moon;	new; a new thing; fresh; #2320 - <u>the first day of the lunar month</u> ;	the New Moons,

		(P: <i>the</i>) (S: <i>plural</i>)			
776 ארץ	earth	וְהָאָרֶץ va ha'ereṭs (P: <i>and</i>) (P: <i>the</i>)	to be firm; the earth ; ground; land; world;	land; earth; ground; the surface of the earth; people of the land; measurements of the earth ; in contrast to Canaan;	and the earth:
2319 חדש	the new	הַ חֹדֶשׁ הַ ha chadash ha הַ חֹדֶשׁ הַ #2320 ha chodesh ha (P: <i>the</i>) (S: <i>singular</i>)	new; fresh; new thing; the New Moon ; by implication, a month: month; new moon;	new; a new thing; fresh; the first day of the lunar month ;	The New Moon
834 אשר	which	אֲשֶׁר 'asher	who; which; what; that ; also; when; where; how; in order that; because;	which; who; that which; since; when; as; if;	that
589 אני	I	אֲנִי 'aniy	I ; me; mine; myself; we; who;	I ;	I
6213 עשה	will make,	עָשָׂה 'asah	to do; to make; accomplish; advance; appoint; bestow; bring forth; set forth ;	to do; to fashion ; to accomplish; to make; to put in order ; to observe; to celebrate; to appoint; to ordain; to bring about;	fashioned and placed in this order,
5975 עמד	shall remain	עָמַד יָם 'amad yim (S: <i>plural</i>)	to stand; abide; appoint ; arise; confirm; continue; dwell; endure; establish; raise up; remain; repair; stand fast; stand firm ; stay up;	to hold one's ground; to stand with; to take one's stand; to be appointed ; to grow fat; to station or set ; to maintain; ordain; appoint; establish;	was appointed
6440 פנים 6434 פן	before me,	לִפְנֵי le paniym #6440 OR לִפְנֵי le pan ay The actual Hebrew word is	the face (as the part that turns) ; before time; as long as; at; because of; countenance; endure; former time; #6434 - corner	plural (but always as singular); the fact; faces; person; surface; before and behind; toward; from before time; in the presence of; in the face of; from before the face of ; #6434 - a) corner (of square objects.) b) corner (of ruler or chief – figuratively.)	for My chief corner [stone],”

		#6434 (P: <i>to, for</i>) (S: <i>My</i>)			
5002 נאם	saith	נאם ne'um	an oracle; has said ; saith;	utterance or declaration of a prophet;	declares
3068 יהוה	the <i>Lord</i> .	יהוה Yahuah	the self-Existent or Eternal; Yehovah ; the Jewish national name of God;	Yehovah ; Jehovah; Yahweh; the existing One; the proper name of the one true God;	Yahuah.
3651 כן	so	כן ken	set upright; just; rightly or so ; as; like manner; straightway; surely; this; thus; true; well; wherefore; therefore;	so ; therefore; thus; just so; then; forasmuch; hitherto; in such case; right; honest; correct; <u>veritable</u> ;	“Wherefore,
5975 עמד	shall	עמד ים `amad yim (S: <i>plural</i>)	to stand; abide; appoint; arise; confirm ; continue; dwell; endure; establish ; raise up; remain; repair; stand fast; stand firm; stay up;	to hold one's ground; to stand with; to take one's stand; to be appointed; establish ; to grow fat; to station or set; to maintain; ordain; appoint;	it establishes
8034 * שם	and your name	ושם כם shem (S: <i>your</i>)	a mark or a memorial; an implication of honor, authority or character; named; famous; renown;	a name; a reputation; fame; glory; the Name (as a designation for God) ; memorial; monument;	your name
2233 * זרע	your seed	זרע עכס zera` (P: <i>and your</i>)	seed; fruit; sowing-time; posterity; children ; seed time;	seed; sowing; offspring ; semen virile; descendants; posterity; children; sowing time;	and your descendants.”
Verse 23					
1961 היה	And it shall come to pass	ו היה hayah ve (P: <i>and, but</i>) (denotes future tense)	to exist; to be or become; come to pass ; beacon; accomplish; cause; do; happen; to set forth; to be in the presence of a person or thing;	to be; to become; to come to pass ; to exist; to happen; to arise; to appear; to be instituted; to be established;	“And it shall come to pass
1767 די	from	מ די me dahee (P: <i>from</i>)	able; enough; very; according to; after; among; sufficiently; from; too much ; after ability;	sufficiency; enough; for; according to the abundance of; out of the abundance of ; as often as;	from its abundance—
2320 חדש	New moon	חדש chodesh	the New Moon ; by implication, a month: month, new moon;	the first day of the lunar month ;	New Moon
2320 חדש	to another	ב חדש chodesh	the New Moon ; by implication, a month: month, new moon;	the first day of the lunar month ;	by New Moon you shall keep;

		(P: <u>by</u> , in, with) (S: you shall do, <u>you shall keep</u>)			
1767 די	and from	וּמֵדָה u me dahee (P: <u>and</u> ; but) (P: <u>from</u>)	able; according to; after; among; enough; sufficiently; <u>too much</u> ; from; very; after ability;	<u>sufficiency</u> ; enough; for; <u>according to the</u> <u>abundance of</u> ; <u>out of the</u> <u>abundance of</u> ; as often as;	<u>and from its</u> <u>abundance—</u>
7676 שַׁבָּת	Sabbath	שַׁבָּת Shabbath	intermission; specifically the <u>Sabbath</u> ;	<u>Sabbath</u> ; a day of atonement; week; a Sabbath year;	<u>Sabbath</u>
7676 שַׁבָּת	to another,	בְּשַׁבָּת Shabbath (P: in, with, <u>by</u>) (S: <u>you shall</u> <u>keep</u>)	intermission; specifically the <u>Sabbath</u> ;	<u>Sabbath</u> ; a day of atonement; week; a Sabbath year;	<u>by Sabbath</u> <u>you shall keep.</u>
935 בוא	shall	יָבֹא bow (P: He will, <u>He</u> <u>shall</u>)	to go; <u>to come</u> ; abide; bring; call; carry; <u>enter</u> ; fetch; follow; get; given; go; grant; send; <u>set</u> ; take in;	<u>to come with</u> ; to come to pass; to attain to; <u>to be</u> <u>enumerated</u> ; to lead in; to gather; to bring near; to bring to pass;	<u>It shall lead</u>
3605 כָּל	all	כָּל kol	the whole; <u>all</u> ; any; every; altogether; as many as; whatsoever; whosoever;	<u>all</u> ; the whole; any; each; every; anything; totality; everything;	<u>all</u>
1320 בָּשָׂר	flesh	בָּשָׂר basar	<u>flesh</u> ; body; person; mankind;	<u>flesh</u> ; mankind; <u>all living</u> <u>things</u> ;	<u>flesh</u>
7812 שָׁחָה	to worship	לִהְשַׁח shachah (P: <u>to</u> , for) (P: the) implied (S: plural feminine)	to depress; <u>worship</u> ; prostrate in homage to royalty or God; bow down; <u>humbly beseech</u> ; show reverence;	to bow down; <u>to prostrate</u> <u>oneself before a superior</u> <u>(God in worship)</u> in homage;	<u>to prostrate in</u> <u>worship,</u>
6440 פָּנִים 6434 פֶּן	before me,	לִפְנֵי le paniym #6440 OR לִפְנֵי la pan e	<u>the face (as the part that</u> <u>turns)</u> ; before time; as long as; at; because of; countenance; endure; former time; <u>#6434 - corner</u> ;	plural (but always as singular); the fact; faces; person; surface; before and behind; toward; from before time; in the presence of; in the face of; <u>from before the face of</u> ; <u>#6434 - a corner (of</u> <u>square objects.)</u> <u>b) corner (of ruler or</u>	<u>according to</u> <u>My chief</u> <u>corner</u> <u>[stone],”</u>

		<i>The actual Hebrew word is #6434</i> (P: <u>to</u> , for) (S: <u>my</u>)		chief – figuratively.)	
559 אמר	saith	אמר ‘amar	to say; answer; appoint; avouch; bid; call; certify; challenge; charge; command; commune; consider; declare ; demand; desire; determine; name; promise; publish; tell; utter;	to say ; to speak; to utter; to answer; to say in one’s heart; to think; to command; to promise; to intend; to be told; to be said; to be called; to boast; to act proudly; to avow ; to avouch;	declares
3068 יהוה	the <i>Lord</i> .	יהוה Yahuah	the self-Existent or Eternal; Jewish national name of God; Yehovah ;	Yehovah ; Jehovah; Yahweh; the existing One; the proper name of the one true God;	Yahuah.

Verse by Verse Comparison of		
	New King James Translation	The Creator’s Calendar New Restored Interlinear Text
Verse 22	“For as the new heavens and the new earth which I will make shall remain before Me,” says <i>the LORD</i> , “So shall your descendants and your name remain.	“For according as the shamayim (starry abode), the New Moons, and the earth: The New Moon that I fashioned and placed in this order was appointed for My chief corner [stone], ” declares Yahuah. Wherefore, <i>it</i> establishes and confirms your name and your descendants.”
Verse 23	And it shall come to pass that from one new moon to another, And from one Sabbath to another, all flesh shall come to worship before Me,” says <i>the LORD</i> .	And it shall come to pass from its abundance— New Moon by New Moon you shall keep; and from its abundance— Sabbath by Sabbath you shall keep. It shall lead all flesh to prostrate in worship, according to My chief corner <i>[stone]</i> ,” declares Yahuah.

Perspective

These multidimensional verses in **Isaiah 66:22-23**, as portrayed by the modern translations, have carried much weight in the circles I have lived in for the first 50 years of my life. These verses established that the *Sabbath* was more than a commandment from which many denominational *churches* could not dismiss as unnecessary, as they proceeded to sweep each commandment, one by one under the proverbial rug. It was a useful *proof text* because in most of the modern translations these verses identified the *Sabbath* as existing into the future when the earth would be restored, or made new, and so established the *Sabbath* as relevant and binding today as well.

I recall as a child, between the ages of 8 and 10, the first time reading this verse and being stunned by the concept of worshiping *from one New Moon to another*. Up to that point my only connection to the concept of the New Moon was through watching the TV show, “Daniel Boon.” His Indian friend, played by Ed Ames, on at least one occasion spoke about meeting up with Daniel Boon on the New Moon. But when I asked the adults about the New Moon in Isaiah, they were quick to dismiss this as of no great importance, but emphasized that the Sabbath only was to be kept throughout all eternity with no connection to the moon. Even then this did not sit well with me because the verse plainly identified the same future significance was applied to the New Moon as to the Sabbath. So for years, I stored up a huge question mark in my mind about the truth of these two verses in Isaiah. Perhaps some of you have had a similar experience.

All these years later the truth was finally realized by degrees as I was able to accept the reality that the Creator’s unique time measuring mechanism in the shamayim (*heavens*) for years, months, and weeks, is predominately based upon **the moon together with the stars by night**, rather than the sun with stars by day. And while many voices continue to scoff and seek to dismiss the significance of the New Moon (#2320 חֹדֶשׁ *chodesh*) as being nothing more than a description of a “month,” the truth is that there is always a first day of any given month, and the word “moon” identifies it as a lunar month. In addition, as illustrated in this Hebrew word study, the multiple reference materials utilized identify *chodesh* as one of three things; 1) Either as the *New Moon lunar phase*; 2) As the *first day of a lunar month*; or as 3) *A lunar month*. Never does *chodesh* refer to a solar month, as is popularly presumed today. **Try, try as one might, the New Moon can NEVER be removed from the lunar month any more than “an end” can be removed from a rope, stick, or measuring device.**

Far and away the mass majority of folks who read this article will be tempted to dismiss the evidence for the simple reason that it does not support their current views. But the truth be told, if it was found in these two verses that the sun, dark lunar phase, or crescent were identified as the Creator’s preeminent guiding light or true New Moon, these same folks would be shouting it from the mountain tops. So to be honest and utterly fair, let these two verses speak for themselves in their Hebrew mother tongue, revealing the unadulterated truths originally intended from the mouth of Yahuah the Most High.

The surest barrier to advancing truth Is the conviction one already has it.

Make no mistake, Isaiah 66:22-23 provides *no avenue of escape* for disregarding the New Moon as the most noteworthy beacon of time of our Creator. If you are currently participating in a calendar style maintained or embraced by the Pope, other religious leaders including Ellen White, or seemingly inspired writings such as the Book of Enoch, which utterly ignore the New Moon of our Creator for months and the start of years, then

you have been deceived. This includes nearly every one of us. For Revelation 13:3 tells us that ***“all the world wondered after the beast.”***

And all the world will receive the Mark of the Beast except those who *keep the Torah of Yahuah* and have the *testimony of Yahusha the Messiah* (Revelation 12:17). His testimony is revealed in the time appointed feast days as beacons by the true New Moon. **It is these set-apart feast days that declare His testimony as the spirit of prophecy in every detail from first to last (Revelation 19:10).** For Yahusha the Messiah is the Alpha and Omega, the Aleph and Tav, the First and Last of our salvation (Revelation 1:8). By obediently keeping the sacred Feast Days we participate from first to last as witnesses in the salvation mechanism of restoring mankind back to the image of the Eternal Father, in this way affirming that the Messiah prophecies are true and that He is returning soon. The fact that you are still alive provides you the opportunity to turn it all around before it is too late.

As you read through these Fatal Errors and the article in general, please refer often to the Hebrew Word Study table as this is the crux of the whole matter.

Fatal Errors in the King James Translation of Isaiah 66:22-23

It will be illustrated here that these verses were proactively and purposefully turned upside down and inside out to hide Yahuah’s true New Moon and Lunar Sabbath calendar model.

Errors in their order:

1. The first fatal error found in **Verse 22** illustrates that the word order was rearranged in order to place the word “new” (H#2319 chadash חַדָּשׁ ים) in front of “heavens” and in front of “earth.” This caused the KJV text to read—*“For as the new heavens and new earth . . .”*
2. The second fatal error is with (H#834 asher אֲשֶׁר). Here only the prefix was utilized and not the word itself. While this is acceptable on occasion, it needed to be mentioned as so many things in these verses were changed. The translators could have utilized “whereas,” but this would cause the verse to lose the context they were looking for.
3. The third fatal error highlights the same word translated two times as “new” (#2319 chadash חַדָּשׁ), but the evidence shows this is a translation impossibility in both cases. These errors are revealed by their attached suffixes. The first use of the word חַדָּשׁ ים has the suffix ים, which identifies the word as a *plural noun*. The word “new” is not a noun and cannot be under any circumstances a plural noun. Therefore this word choice is hopelessly

incorrect. Strikingly, the second time this word is given in the Hebrew text the suffix ך identifies it as a singular noun. Now let's apply the correct Hebrew word (H#2320 chodesh חֹדֶשׁ י), which is a the noun “new moon,” and is spelled exactly the same in Hebrew as (H#2319 chadash חָדָשׁ). Now both of the words with their suffixes work perfectly, and it reads, “*For according as the shamayim (heavens), the New Moons, and the earth: The New Moon that I fashioned and placed in order . . .*”

4. The fourth fatal error is with (H#6440 panyim פָּנִים), a plural word being wrongly applied (H#6434 lapanay לִפְנֵי), which is not a plural word form. H#6434 is a perfect fit for the word pan פָּן. Then by including the prefix and the suffix you will have the phrase לִפְנֵי — “*for My chief cornerstone.*”
5. In this fifth fatal error, found in **Verse 23**, the KJV only utilized the prefix and not the Hebrew word (H#1767 me dahee מִדָּהֵי). This word that is completely missing is the word “abundance.” It is this word that identifies which lunar phase is the true New Moon and chief cornerstone of Yahuah’s time system.
6. The sixth fatal error, is exactly the same as the one above, but because the translators ignored this word a second time, it punctuates a proactive attitude to cover-up this word “abundance.” **The second time this word is used it identifies that the Sabbath is to be reckoned from the abundant New Moon.** But this truth about the Sabbath exposes the false calendar styles set up by both the Jews and Romans alike, and so by necessity they must camouflage it, causing it to simply disappear.
7. The seventh fatal error is the removal of the word New Moon (H#2320 chodesh חֹדֶשׁ י) in the second time it was to be used. In its place the word “to another” was interjected. While this technically means the same thing, there is an undermining of the importance placed upon the New Moon.
8. Similar to the one above this eighth fatal error inserted the word “to another” to replace the word (H#7676 Sabbath שַׁבָּת ו). This illustrates that the translators willfully chose a word that had no relation to the Hebrew text.
9. The ninth fatal error is regarding the second use of the word (H#2320 חֹדֶשׁ י) chodesh New Moon in **Verse 23**. Both the prefix and the suffix were completely eliminated. This suffix comes with a command from Yahuah that defines “*you shall keep.*” So applying this to the sentence we get, “*And it shall come to pass from its abundance— “New Moon by New Moon you shall keep. . .*”
10. The tenth fatal error is exactly like the ninth, but it applies to the second use of the word “Sabbath” (H#7676 שַׁבָּת ו). The translators eliminated both the

prefix and the suffix. No doubt this was imperative to protect their counterfeit calendars, because here again the suffix contains the command of Yahuah, “*from its abundance (referring to the New Moon)—Sabbath by Sabbath you shall keep.*” It is in this portion of the verse that the full truth regarding how to locate the seventh-day Sabbaths becomes crystal clear. Because the suffix defines that this Sabbath should be “**kept,**” makes it impossible to explain away the connection between the New Moon and Sabbath, by saying from month to month and week to week.

11. This eleventh fatal error for (H#935 bow בִּיאָ), utilized only a portion of the prefix “shall,” but entirely ignored the “it or He” that is part of the prefix, rendering “he shall, or it shall.” We know this must be the word “it,” because it is being declared by Yahuah. Further, by ignoring the main word בִּיאָ the context and truth was lost that the New Moon shall lead all flesh in when to worship.
12. The twelfth fatal error (H#6440 lepanay לִפְנֵי) is exactly like the fourth. But here the subject has shifted to **when mankind is to worship Yahuah**. Here the truth is provided by applying the correct word לִפְנֵי, which means “*according to My chief cornerstone.*” So the entire sentence is harmonized with the previous text, “*It shall lead all flesh to prostrate in worship, according to My chief corner [stone], declares Yahuah.*”

Between these two verses of Isaiah 66:22-23 the word “New Moon” was removed three times, twice in **Verse 22** and once in **Verse 23**. As it turns out, the focus of **Verse 22** is not on a “new” shamayim and “new” earth, but rather on an ongoing perpetual time-keeping model *as seen from earth* and that is to continue into the millennial kingdom and beyond. The corruption of this verse is an all-out attack by the enemy of souls to hide the imposing importance of Yahuah’s *full* New Moon. By doing this, the Sabbath was caused to appear to harmonize with the modern week, which cycles without end according to the Roman calendar.

It wasn’t until I completed this detailed Hebrew Word Study on these verses in Isaiah 66:22-23 that the magnitude of this calendar cover-up within the very pages of Scripture, was clearly realized. These verses were slaughtered in every imaginable way for the purpose of removing SEVEN FACTS.

1. The ***Lunar-Astro-Line Time*** perspective from earth by night vs. the ***Lunar-Solar-Line Time*** perspective from earth by day.
2. The true New Moon was placed in a specific order among the phases at Creation.

3. The full New Moon was appointed as the **chief corner stone of TIME**, by the Creator, and NOT THE SUN or the CRESCENT MOON.
4. The true New Moon establishes who His obedient followers and their descendants are.
5. “*From ITS ABUNDANCE, New Moon by New Moon you shall keep,*” identifies the New Moon lunar phase as FULL.
6. “*From ITS ABUNDANCE, Sabbath by Sabbath you shall keep.*” **This identifies that the Sabbaths were designed to be counted from the full New Moon each lunar month, and were never intended to cycle without end.**
7. This *full* New Moon shall lead all flesh to prostrate in worship to the Eternal Yahuah alone, fulfilling its role as the **chief corner stone of TIME**.

The Lunar-Astro-Line Time Perspective from Earth

Right out of the gate **Verse 22** begins by establishing a foundational **order** for both verses by stating:

“For according as the shamayim (starry abode), the New Moons, and the earth: **The New Moon that I fashioned and placed in this order . . .**”

Notice that the sun is entirely missing from this phrase identifying the order of Yahuah’s lights, as well as from the entire two verses of this study. **This is NOT an oversight!** This is a detailed revelation of Yahuah’s prescribed *order of the lights* as seen from the earth that define His New Years and New Months. For this alone is the protocol for how Yahuah’s mandated time measuring mechanism works. This portion of the **Verse 22** provides an example of **Lunar-Astro-Line Time**, which is the Creator’s prescription for measuring time as found in both Genesis 1:14 and Psalms 136:7-9. This is the first of the four extraordinarily unique New Moon identifiers within these two verses.

Three Scripture Witnesses Testify The Creator Established *Lunar-Astro-Line Time*

Succinctly, each of the following three verses testify that the Creator ordained **the moon to rule together with the stars by night**, and NOT the sun to rule with the stars by day.

“Then Alahim made two great lights: the greater light to rule the day, and **the lesser light to rule the night**. *He-made with the stars also.*” Genesis 1:16

“To Him who made great lights, for His compassion *endures* forever— the sun to rule by day, for His compassion *endures* forever; **the moon and stars to rule by night**, for His compassion *endures* forever.” Psalms 136:7-9

“Thus says Yahuah, who gives the sun for a light by day, **the ordinances of the moon and the stars for a light by night . . .**” Jeremiah 31:35

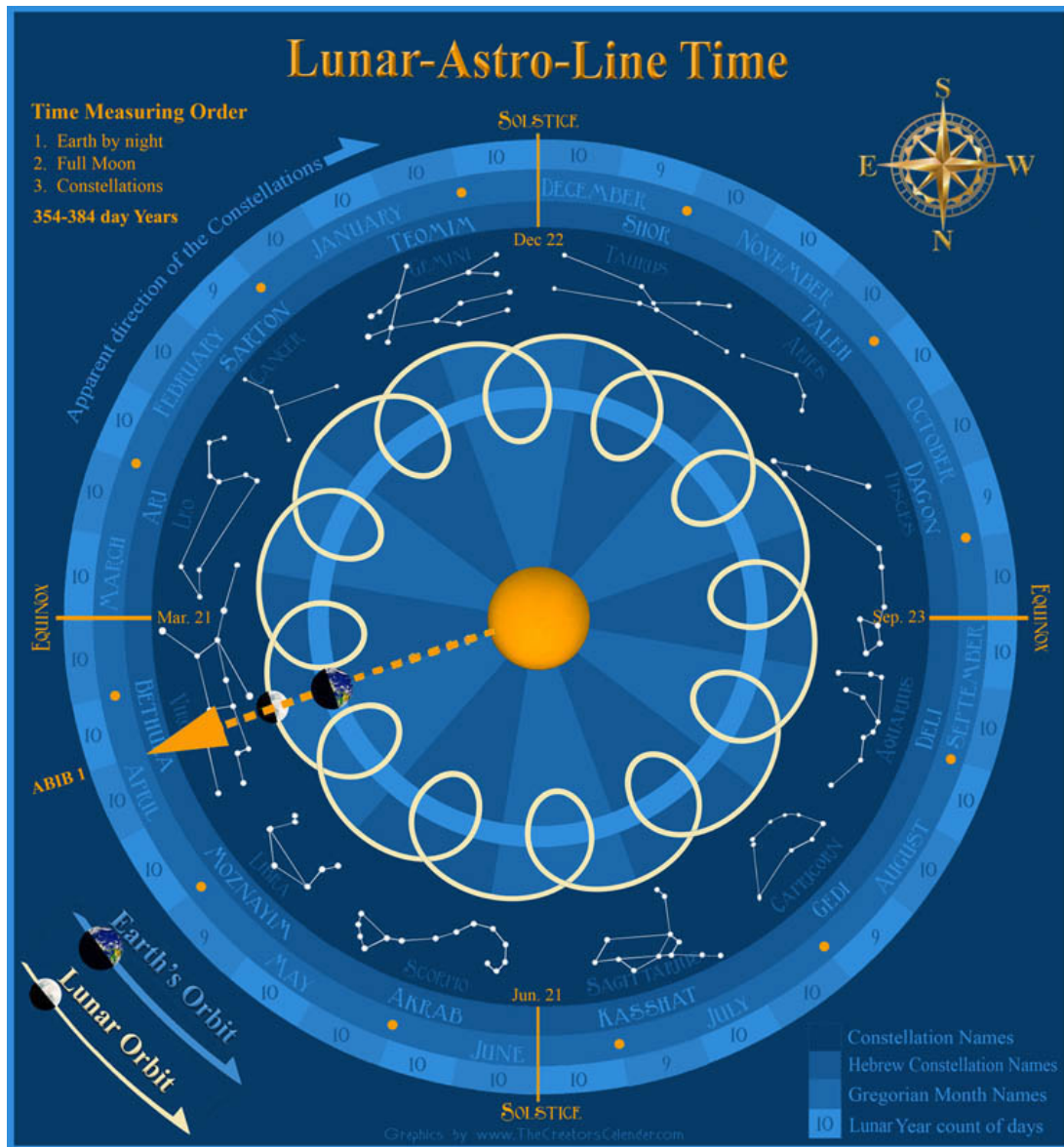
The full moon is the only lunar phase that at its optimum is a BEACON OF LIGHT and also consistently arises in the east nearest sunset when it rules together with the stars. It’s visible and brilliant (G#4582 – *selene*) light display is only possible because of its perfect alignment with the sun and earth. This dual fact is what makes the full moon the only “stand out” New Moon qualifier for marking the first day of the year and month as well as each consecutive starry constellation that is to rule with it.

Although the Creator did ordain the year to commence in the spring, His true celestial time-piece is marked by the *full* New Moon that arises together on the eastern horizon with the constellation Bethula (*Virgo*) at sunset, “*And there appeared a great sign in the shamayim, a woman clothed with the sun, and the brilliant (G#4582 -selene) moon under her feet . . .*” As a result, the only part the sun plays in marking the year is that its brilliant light is reflected by the full moon when in perfect opposition.

This ensures that the constellation Bethula (*Virgo*) the virgin will rule each year in spring as viewed from earth by night (Revelation 12:1). In contrast, nowhere in Scripture will you find any indication that the Creator appointed of the dark lunar phase or crescent, as is popularized by the ***Lunar-Solar-Line-Time*** (180 degrees opposite), or the entirely moon-free ***Solar-Line-Time*** that is utilized by most of the world via the Roman Gregorian calendar. Both of these are identified by the position of the sun by day as the pointer to the invisible constellations. Strikingly, both of these popular time measuring models are reminiscent of the ancient pagan sun-worship cults.

Lunar-Astro-Line Time is the Creator’s standard for marking time that is confirmed by Scripture in multiple places and ways. This is the perspective as viewed from earth by night by an imaginary straight line drawn from earth through the full moon to mark a ruling starry constellation, or vice versa. From earth’s perspective on the last night of each luni-astro year this occurs when the full moon arises at the feet of the woman Bethula (*Virgo*) or near her waist (Revelation 12:1), announcing the New Year will begin the following morning at sunrise. For on that night alone the full moon arises in the east in line with its appointed constellation. The next morning is marked as the first day of the new month as it is the first morning the moon in its fullness is visible in the west before setting at sunrise.

Additionally, each lunar month the full moon arises in the east and marks the ruling constellation for that specific month. This commences on the night that the brilliant (#G4582 *Selene*) full moon rules the sky from east to west and from sunset to sunrise.



The above astroplot illustrates the Scriptural **Lunar-Astro-Line Time** model for measuring time as seen from earth at sunset. Not surprisingly, it is the exact opposite of **Luni-Solar-Line Time** and **Solar-Line Time**, as shown below. As a result, the New Moon lunar phase utilized to depict the Scriptural **Lunar-Astro-Line Time** is strikingly contrasted to all the forms of solar reckoning whether they utilize a New Moon or not, as with the Gregorian and Enoch calendar, and whether they follow the dark occulted lunar phase or the crescent. Below are three astroplots depicting that any system for measuring time that utilizes **an imaginary straight line through the “sun,”** whether it utilizes the moon or not, by its

very nature is a polar opposite of Yahuah's authorized and Scripturally mandated calendar model.

Note: This website now believes in Geocentrism, the earth centered model of the universe. However, you will find each of the four *astroplot* illustrations continue to reflect the Heliocentrism model for the mere reason that it is easier to illustrate. This does not affect the fact that all the Solar-Line Time methods remain 180 degrees opposite of Yahuah's sacred and set-apart method of time measuring. However, these illustrations may change in the future.

Also, note that it is impossible to accurately depict the spiral lunar orbit as it changes length from year to year. Some years contain 354 days and other years 384. But even so, the full New Moon holds the key that consistently marks the constellation Bethula as the start of each year.

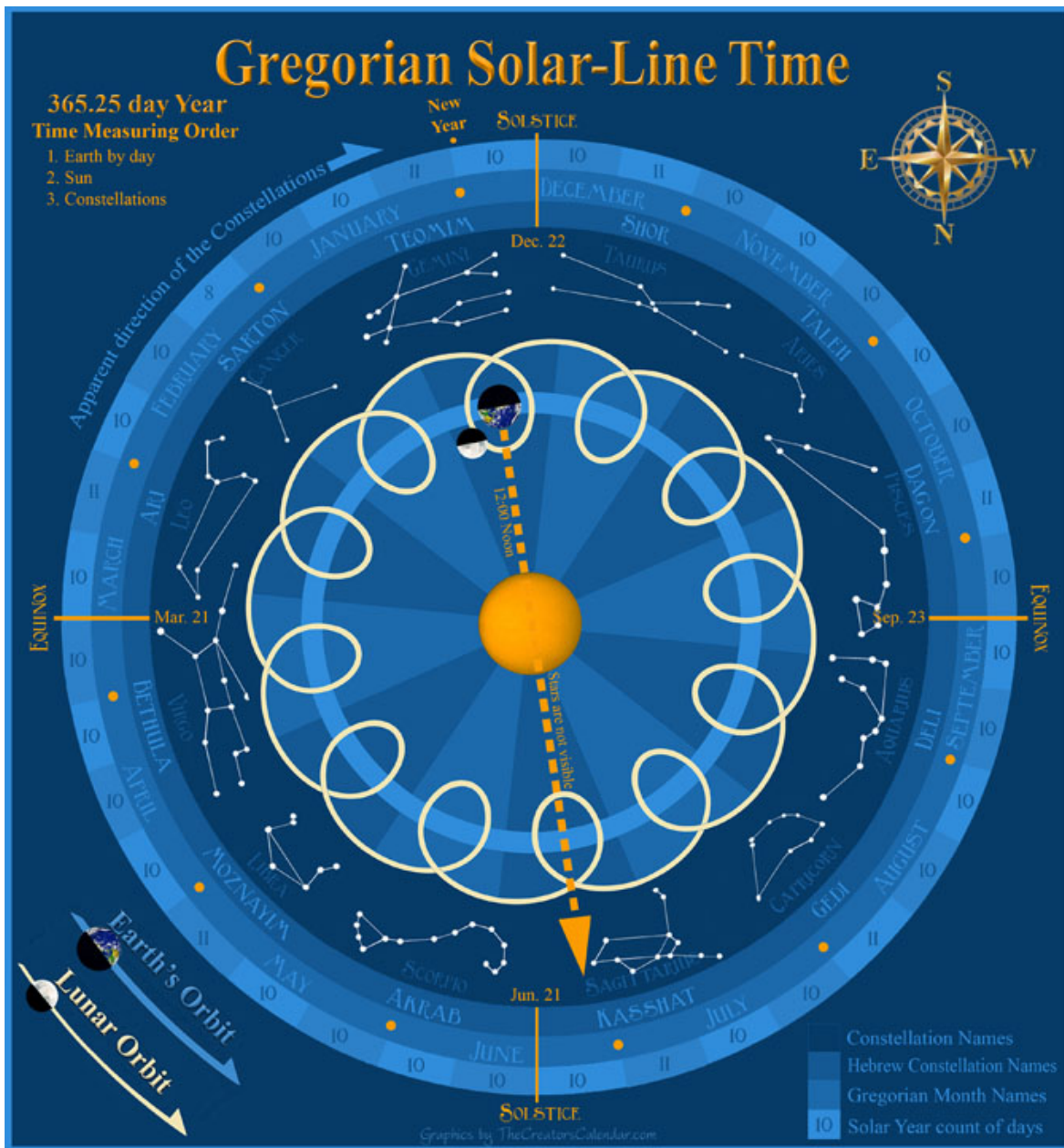
Modern Gregorian Time is based upon the Solar-Line Time

The modern Roman Gregorian calendar time measuring system has been adopted by most of the world today. It is based upon the principles of measuring time that utilizes the imaginary **Solar-Line**, as viewed from earth at noon, through the sun, and marks the ruling constellation of the Zodiac that is not even visible. This system begins in winter instead of spring and declares Sagittarius as the first constellation of the year, although not visible in the night sky at this time of year. It is only visible in the sky between spring and fall. This Roman calendar model continues to ignore the relevance of the moon, remaining true to the decision of Julius Caesar to remove the moon from Roman time-keeping way back in 45 B.C. But in the years preceding this date, the Roman Empire, like all other nations original measured months and years according to the moon.

“In the mid-1st century B.C. **Julius Cæsar** invited Sosigenes, an Alexandrian astronomer, to advise him about the reform of the calendar, and **Sosigenes decided that the only practical step was to abandon the lunar calendar altogether.** Months must be arranged on a seasonal basis, and a tropical [solar] year used, as in the Egyptian calendar.” *“The Julian Calendar,” Encyclopedia Britannica.*

Make no mistake, it was by removing the moon as a beacon of time that started the Romans on a journey of measuring only the sun against the backdrop of the constellations and developing their own model of month length, that also allowed the weeks to drift throughout the months and years with no relevant connection to either. This had always been the role of the moon to designate months. Then they sold this to the entire world as having existed since the time of creation. The world bought into this lie, because the

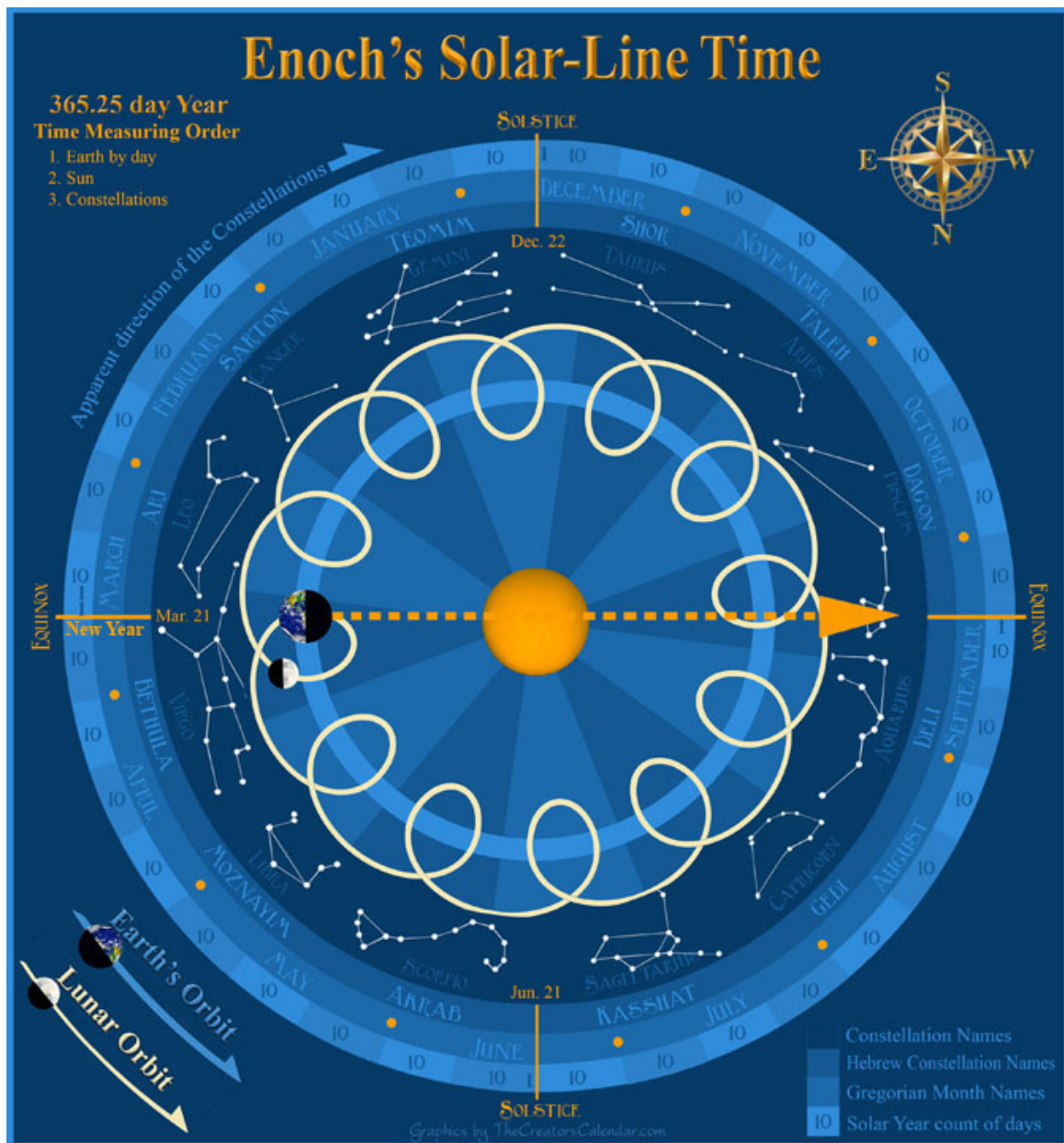
Scriptures appeared to support this view. Ironically, the Romans together with the Jews had their hands on the sacred manuscripts. It indeed appears that some things relating to time have been changed in both the oldest manuscripts as well as the translations.



This view of the *Gregorian Solar-Line Time* does not fit the Scriptural model, as the Creator's signs, seasons, days, and years were each to be governed by the sun for days, and by the moon and stars by night for years, months, the count of weeks, and demarcation of dates for the purpose of bearing testimony of the Creator of the shamayim and earth. It is an utter impossibility for a week, which cycles with no relevant connection to the celestial orbit of the shamayim (heavens), to be the SIGN POST for Creation, or an ambassador of the Creator.

Enoch's Solar-Line Time as Measured through the Sun

This *astroplot* below illustrates the ever-growing-in-popularity, **Enoch solar calendar** with its *Solar-Line Time* entirely independent of the moon. It is similar to the modern Gregorian calendar in that it is based upon the principles of a 365.25 solar year with no connection whatever to the lunar phases. But this is where the similarities end. The Enoch calendar is all about the sun and the vernal equinox with consistent 30 day months. Each quarter of the year one day is added to bring its total to 91 days. Then an additional day is added on the last day of the year, bringing the total number of days of the year to 365.



While this calendar entirely disregards the New Moon of Scripture, it is surprising how many folks claiming *solo Scriptura*, are choosing this form of time-keeping. Its primary time indicator is the sun, which continues to mark the ruling constellation of stars on the

opposite side of the universe by day, when they are neither visible nor ruling according to Scripture's standards. **Remember, according to Scripture the sun was designed to rule alone and never with the stars, while it was the *full* New Moon that the Creator designed to perpetually rule together with the stars by night.**

So it is that any method that falls short of the Creators template for time-keeping is **unlawful** within His Kingdom. Anyone continuing to follow a ***Solar-Line-Time*** system once they have been shown ample evidence to the contrary in the Tanakh is in rebellion to their Creator. Please take the time today to review these revealed truths. The Messiah has already made a way of escape and is now restoring His divine truths to those who will be obedient.

To the **Torah** and to the **testimony**: if they speak not according to this word, it is because there is no LIGHT in them. Isaiah 8:20

The Torah is the first five books of the Tanakh (OT) and the testimony are the seven sacred Feast Days that include the Renewed Covenant account that verifies that indeed the Messiah did come and He fulfilled the Feasts of Passover and Unleavened Bread, perfectly. For these Feast Days were ordained to tell the Messiah's salvation story every year from beginning to end, and from *full* New Moon to *full* New Moon. The *Torah and the testimony* are like a GPS Unit that pinpoints where the truth may be found. If the *Book of Enoch*, or any other writings considered to be inspired, come between a person and the TRUTH as found in *Torah and the testimony*, then they can no longer claim Scripture as their foundation or guide, and there is NO LIGHT in them.

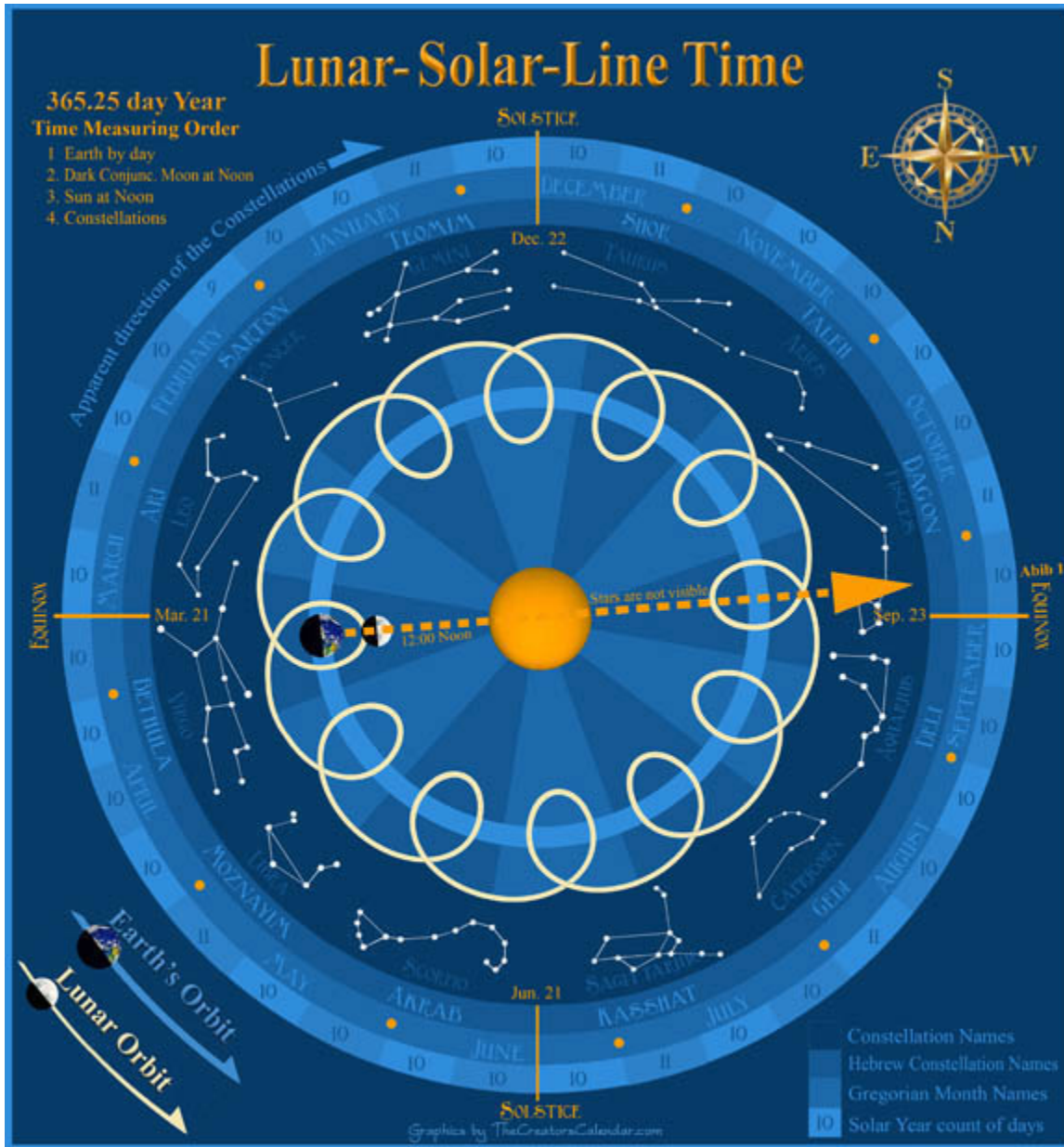
Lunar-Solar-Line-Time as Measured Through the Sun

In essence this ***Lunar-Solar-Line Time*** as shown below, measures for both the dark lunar phase and the crescent. For the New Moon Day in both cases must first commence with the lunar conjunction as the occulted moon event. Each group may have differing beliefs on this. Even though the moon is part of this equation, it is nullified by the sheer fact that this system of measuring time is aimed through the sun and thus flies in the face of the Creator.

From earth at noon on this day shortly after the vernal equinox, the moon is not visible because it lies in the visual path of the brilliant sun. Several times a year the sun can even be eclipsed by the occulted moon rendering it also invisible as the occulted sun. But most striking of all is that every single month **following the imaginary *Lunar-Solar-Line Time*, the starry constellations are NEVER visible.** The ruling constellation can only be deduced via an *astroplot*, such as the one below, while utilizing the Lunar-Solar Line marker.

In the astroplot below, *DAGON*, also known today as Pisces, is ruling the first month of each year. This illustration reflects the position of the modern Jews, who combine the

Lunar-Solar-Line Time to mark the commencement of their adulterated version of the sacred Feast Days, but also continue to adhere to the Gregorian calendar for years and weeks. Read the story of Dagon and how the Eternal felt about this pagan god. (1 Samuel 5:1-8)



"...Another symbol of the *Christian church and Jesus* is the **fish**. Many people put the *Jesus fish* on the back of their cars ...with little idea of what it really means. The fish does not represent *Jesus*, it represents the constellation of Pisces. In 2005 an ancient *church* was discovered buried under prison ground in *Uriah Israel* a large mosaic tiled the floor and depicted was two fish, facing opposite directions and stacked on top of each other. This two fish picture is classic representation of the age of Pisces. In

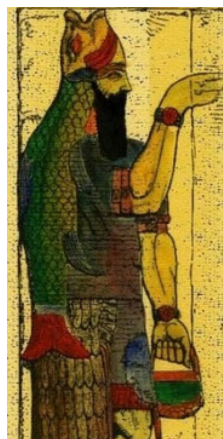
the *Bible*, *Jesus* comes across two fisherman and says '*Come and I will make you fishers of men,*' and later feeds an entire crowd of people with a few loaves of bread and two fish. Eventually the fish would come to represent *Jesus, the god* of the *Christian* religion.

Predating *Jesus*, however, *Dagon* was the *Piscean* fish *God*. The Catholic Pope does not represent *Jesus*, he represents *Dagon*, In fact, the mitre he wears is shaped like a fish and is the official fedora of *Dagon*..." *A new Order of the Ages: Volume One: A Metaphysical Blueprint of Reality and an Expose On Powerful Reptilian/Aryan bloodlines* – Colin Robert Bowling, Bloomington, IN 47403: IUniverse (2011)

Carrying this thought forward of *Pisces as Dagon*, here is an artist's rendering of the attire worn by the *High Priest* Caiaphas at the time of the Messiah. Notice He is depicted as wearing the *Dagon* mitre with a crescent moon in front of it. This is illustrating a *Lunar-Solar-Line Time* marker. While this is in harmony with modern Judaism today, it is my current belief that Israel at the time of the Messiah's first coming were for the most part keeping the correct *Lunar-Astro-Line Time* calendar, but shortly thereafter adopted the *Lunar-Solar-Line Time* that they continue to keep today. The three points that can be drawn from this are:



1. This *Dagon* mitre represents **modern** Jewish timekeeping. *Pisces* is *Dagon* constellation. The crescent together with the sun marks this pagan *god Dagon* as the first and supreme ruling constellation of the year for them. According to this sign of *Dagon*, all the feasts of Yahuah are currently reckoned by the Jews, Messianics, and some luni-solar Sabbatarians. This illustrates that all who follow this system of time reckoning are doing so entirely based upon occult paganism, falling outside the pail of the Creator's authorized time- measuring protocol. And even though this is only a drawing, it is clear the connection was made that *Pisces is Dagon the fish god*.
2. The second point, long suspicioned, is that the Jews current *Lunar-Solar-Line Time* measuring is 100% of the time paying homage to *Dagon* in league with Rome. Rome may even be their supreme ruler. But the reverse may be true, as the Zionist Kabbalah ordains the Jews as rulers of the whole world. Strikingly, ALL Roman Bishops and Popes



Dagon Priest
with Fish Hat



Catholic Pope
with fish hat



So the Catholic
popes wear the
same style hat as
the old Pagan
priests who
worshiped the
fish god Dagon



are priests according to the order of *Dagon*, and not Melchizedek as are Yahusha the Messiah and His true followers.

3. The modern Jewish calendar will NEVER identify the true set-apart worship days of Yahuah via this line of measure through the dark or crescent New Moon, through the sun, and onto *Dagon*. All this will produce is erroneous non-sacred days, and its worship will be received by Satan, the prince of darkness. Might this have been what was troubling Yahuah when Israel went into idolatry in the days of the Prophet Isaiah, and He declared in His frustration?

“Your New Moons and your appointed feasts My soul hates; they are a trouble to Me, I am weary of bearing *them*.” Isaiah 1:14

I contend that the change from the original *full New Moon* of Creation to this deception from the PIT OF HELL took root off and on throughout Israel’s history. This became their fixed system of time measuring between the first and fourth century A.D. It appears to have been accomplished with the aid of Roman influence beginning after the crucifixion of the Messiah. So, together with Rome, the Jews continue to renew their covenant with Satan each and every spring when the occulted moon together with the sun, mark the occulted constellation *Pisces*, paying homage to the pagan *god Dagon*.

The New Moon Placed in a Specific Order

. . . The New Moon that I fashioned and **placed in this order** was appointed for My chief corner [*stone*]. . .” Verse 22

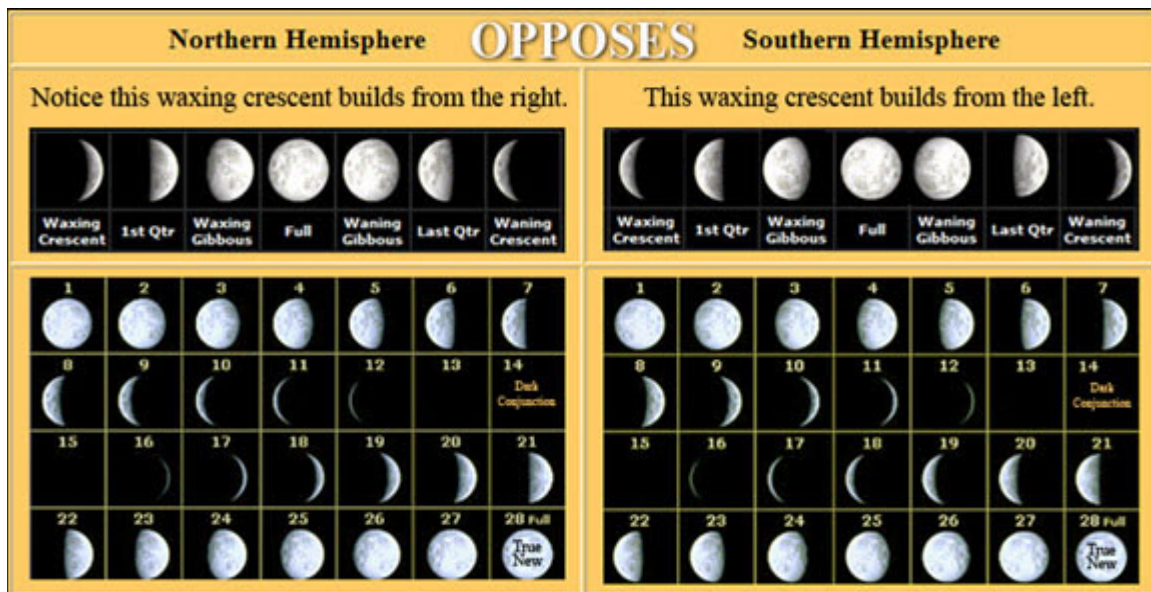


This next revealing phrase in **Verse 22** identifies that Yahuah’s true New Moon, which He fashioned at creation; **He also placed in a specific order** among the 30 lunar phases that occur throughout the lunar month. Just any lunar phase will not do, no matter how long it has been traditionalized, charted, and perpetually kept by millions of Muslims, Jews, and other sincere followers. **Sincerity is not the sign of truth.** If it were, then all the thousands of religions of the world, no matter their

beliefs, could by all intents and purposes, be a WAY unto salvation. But Scripture is the only guide, and the Messiah declared that He alone, as the Aleph and Tav, is that WAY, and that “*no one can come to the Father except through Him*” (*John 14:6*). And even while there are errors in Scripture, the truth can be found through the weight of evidence. Each of us needs to become better students of His WORD that we may discern for ourselves the truth from error, and the correct New Moon from the counterfeit.

There are only three contenders for the true New Moon.

1. This includes the **dark conjunction** lunar phase, for the reason that it aligns with the earth and sun every 29 to 30 days.
2. The next is the **crescent lunar phase**, for the mere fact that it is the first lunar phase to visibly appear following the dark conjunction. So for this reason it is considered first in order by many.
3. And the third is the **full moon**. This is a candidate for the sheer fact that 1) In its fullness, it is a bold and brilliant light (*G#4582 Selene*), creating a marvelously visible display. 2) It is the only lunar phase that rules the entire night, arising in the east and setting in the west following sunrise. 3) **This is the only visible lunar phase that appears exactly the same in both the northern and southern hemispheres within the same 24 hour period.** All other lunar phases occur in the opposite perspectives. Is it not the Creator's will that all the world should have access to the same New Moon lunar phase on the same night?



The full moon is like a pizza pie. One must start with a whole pizza before it can be divided. 4) Also, the full moon is perfectly symmetrical, whole, and fully lit, as defined by the following Scripture verse. Strikingly, there is only one lunar phase that qualifies as the **perfect day**.

But the path of the just is as the **shining LIGHT, that shines more and more unto the perfect day**. The way of the wicked is as darkness: they know not at what they stumble. Proverbs 4:18

While there are three basic categories of lights in the shamayim (*heavens*) that include the sun, moon, and stars, the only LIGHT that exhibits changes with progressive waning and

waxing phases is the moon. This verse beautifully illustrates a comparison of all of Yahuah's obedient and righteous followers being likened to the **MOON that shines more and more unto the perfect day**. So the question that remains is, *what is the perfect day?* Well, according to this verse it is the most important and revered of all the lunar phases. So without partiality, and simply following the text, **this can only be referring to the true and original New Moon as being the full moon**. As a result, the lunar phase that was placed in a specific order to be the chief cornerstone is none other than the full moon. This is the second of three New Moon identifiers held within these two verses of Isaiah 66.

There is one thing this text does not say, it does not say “*the light that wanes less and less until the perfect day*.” If it did this would be profound evidence for a dark conjunction New Moon, and many would be quoting this verse. But truth is sometimes stranger than fiction, and because the truth has been hidden for so long, many have come to believe a lie and will be unwilling to be moved by any amount of objective evidence. For to them, what every the modern Jews believe is the New Moon and Sabbath, is good enough for them. For how could all the Jews have lost these so important truths?

The Chief Corner Stone

“For *according* as the shamayim (starry abode), the New Moons, and the earth: The New Moon that I fashioned and **placed in this order was appointed for My chief corner [stone]**,” declares Yahuah...” Isaiah 66:22

A Cornerstone

The **cornerstone** (or **foundation stone**) idea is derived from the first stone set in the construction of a masonry foundation. This is most significant since all other stones will be set in reference to this stone, thereby determining the position of the entire building.



Over time the cornerstone became a ceremonial masonry stone, set in a conspicuous position on the outside of a building, often **with an inscription on the stone indicating the construction dates of the building with the names of architect and builder**.

The custom of laying a cornerstone is an important cultural component of eastern architecture and metaphorically in sacred architecture generally.

The origins of this tradition are vague but its presence in Judeo-Christian countries can be associated with at least six quotations from the Tanakh ([Job 38:6](#), [Psalm 118:22](#), [Isaiah 19:13](#), [Isaiah 28:16](#), [Jeremiah 51:26](#), [Zechariah 10:4](#)) and also six citations in the Renewed Covenant ([Matthew 21:42](#), [Mark 12:10](#), [Luke 20:17](#), [Acts 4:11](#), [Ephesians 2:20](#) and [1 Peter 2:7](#)) and [Isaiah 28:16](#) quoted by the writer of the Book of 1st Peter in chapter 2, verse 6 [1 Peter](#). The writer of the Book of Ephesians makes it clear that **Yahusha the Messiah is the cornerstone**, of belief rather than a building, referred to in the Renewed Covenant [Ephesians 2:20](#). *Gathered from Wikipedia*

I find it of great interest that the chief cornerstone is often engraved with **the name of the architect and builder, as well as the year**. Applying this to Scripture, the architect is the Creator Alahim (Genesis 1:1, Hebrews 11:10), which is a plural reference to both the Father and Son. Likewise, they are the builders of the shamayim (*heavenly*) Temple in which the Messiah carries the roles of Lamb, High Kohen Melkizedek, and is finally crowned the King of Kings by His Father. He made eternal life possible to all who confess their sins to Him and obey His teachings from Genesis to Revelation. Yahusha, the Messiah accomplished this by dying as our sacrificial LAMB substitute at the appointed time of **the 14th day as counted from the New Moon**, in A.D. 31. This is the date that will for all eternity be associated with our *chief cornerstone*, Yahusha the Messiah.

Therefore thus says Yahuah: "Behold, **I lay in Zion a stone for a foundation, a tried stone, a precious cornerstone, a sure foundation . . .**
Isaiah 28:16

Three astonishing things become apparent in this portion of **Verse 22** regarding the *chief cornerstone*:

1. The first stone set in place defines the layout of the entire structure. It is incredible how this *chief cornerstone* applies to the full moon as the New Moon, which is both a stone and one containing 30 vicissitudes. But only one is the true chief cornerstone of Yahuah's sacred appointed fixed time. Yahusha the Messiah embodied each portion of the redemption process according to the rhythm of the New Moon *chief cornerstone*. By working together, the plan of salvation has a sure foundation. **For these two go hand in hand and cannot be separated from one another** in their cooperative work of the Temple services as it relates to the salvation of mankind. This is because the full New Moon announces all the set-apart feast days that identify each phase of the Messiah's ministerial work. **Together they prophetically announce and fulfill both the sacred EVENTS and the**

appointed TIMES with accuracy and assurance. These represent the WHAT and WHEN so that Yahuah's obedient may follow the LAMB whithersoever He goes and bare His Testimony to the Ruach (*Spirit*) of Prophecy.

"It shall be established forever like the moon, even like the trustworthy witness in the sky." Psalms 89:37

2. From the other Scripture verses highlighted in the table above in Psalms and Matthew referring to the **chief cornerstone** of the earthly temple, we find that the stone that the **builders rejected** for the temple became the chief. So, for the very reason that the **Messiah was rejected**, and because He cannot be separated in principle from the true New Moon, which announces His comings and goings, then it is not a stretch of the imagination to conclude that **the true New Moon was itself also rejected** from that time forward. By extension, this verse suggests that since that time, whatever New Moon has been promoted and traditionally sanctioned by the "builders" (Israel) of the earthly Temple in the first century following the time of the Messiah, CANNOT BE THE TRUE NEW MOON.
3. A foundational reality relating to the **chief cornerstone** of any building project, including the sacred Temple is that **it must be fully visible and perfectly symmetrical.**

As a result of the three points found in this portion of **Verse 22**, the details relating to the **chief cornerstone** pinpoint for a third identifier that the true New Moon from the time of Creation was, and still is, the *full* New Moon.

The New Moon Establishes Your Name

. . . "Wherefore, *it* [the New Moon/Messiah] *establishes and confirms* your name and your descendants." Isaiah 66:22

It appears that the *full* New Moon, which beacons the start of the New Year, the New Moon Day, and all the Sabbath Days, along with the yearly set-apart Feast Days, shall be mankind's test of obedience to Yahuah the Most High, as the Plan of Redemption is worked out in real time. The final sentence of **Verse 22** brings home the relevance that the true New Moon, together with the Messiah, as the **chief cornerstone**, is to establish who Yahuah's obedient followers are by confirming their names in the *Lamb's Book of Life*, along with their descendants who remain obedient. For this is where names are established and confirmed.

But there shall by no means enter it anything that defiles, or causes an abomination or a lie, **but only those who are written in the Lamb's Book of Life.** Revelation 21:27

At that time Michael shall stand up, the great prince who stands watch over the sons of your people; and there shall be a time of trouble, such as never was since there was a nation, even to that time. **And at that time your people shall be delivered, everyone who is found written in the book.** Daniel 12:1

Now is the time of preparation! Now is the time to read and digest the importance of the full New Moon and its integral relation to the true Messiah!

From Its Abundance – New Moon by New Moon

“And it shall come to pass **from its abundance— New Moon by New Moon you shall keep . . .**” Isaiah 66:23

Verse 23 opens by identifying that New Moon by New Moon should be kept sacred according to the ***abundance of the full moon lunar phase***. The concept of ***abundance*** refers to: 1). the abundance of LIGHT it displays; 2).The *length of time* the full moon is in the night sky; 3). The fact that it must rule from the eastern horizon all the way to the western horizon while visible and set after sunrise So the abundance equates with both the full moon lunar phase and the length of time it shines its marvelous and brilliant light throughout the entire night. Shocking, as it may be to some, the only lunar phase that qualifies as the abundant moon, is the full moon that measures the lunar months from full moon to full moon. Each full moon announces the following morning to commence the New Moon Day at sunrise, which is to be kept set-apart for sacred use. This idea that the New Moon Day was intended to be a sacred day by the Creator has a second witness in Ezekiel 46:1-3.



"Thus says Yahuah Alahim: "The gateway of the inner court that faces toward the east shall be shut the six working days; but on the Sabbath it shall be opened, and on the day of the New Moon it shall be opened. . . **Likewise the people of the land shall worship at the entrance to this gateway before Yahuah on the Sabbaths and the New Moons.** Ezekiel 46:1-3

Try, try as one might, neither the crescent nor the dark lunar phase can ever be considered “abundant,” either in their light display or length of time they are visible. This is because

the sun, moon, and stars that the Creator designed and placed in their order in the shamayim have their greatest value when they are fully visible and ruling from horizon to horizon, and exhibit marvelous abundant LIGHT.

Further support for this view illustrating that the “abundance” refers to the fullness of light on the face of the full moon is found in Isaiah 28:19. While this verse does not actually say this is the *full moon*, **it is in the description of the abundant moon crossing over and then vanishing at sunrise that clarifies it as the full moon.** For the only lunar phase that begins closest to the eastern horizon and **crosses over the entire sky by night** to the western horizon and disappears after sunrise, is the full moon. As a result, this is the sign that announces the New Moon Day begins at sunrise.

According to its abundance it crosses over, so it shall be your sign marker. For assuredly in the morning **with sunrise**, it shall vanish by day. But by night it shall be the established beacon, yet surely an object of controversy to understand and heed the announcement.” Isaiah 28:19 *The Creator’s Calendar Restored Text*

This is the fourth unique and remarkable identifier that these two verses in Isaiah 66 utilize to describe that indeed the New Moon is the *full moon* lunar phase, as no other lunar phase qualifies.

From Its Abundance – Sabbath by Sabbath You Shall Keep


And it shall come to pass from *its* abundance— New Moon by New Moon you shall keep; **and from its abundance— Sabbath by Sabbath you shall keep.** . . . Isaiah 66:23

Continuing in **Verse 23**, this may be the most remarkable statement of all within these two verses of Isaiah 66:22-23, as we are each confronted with the truth that the Creator’s original calendar was not only reckoned from one *full* New Moon to another *full* New Moon, but **His sacred seventh-day Sabbaths are to be counted from the same “abundant” *full* New Moon each lunar month.**

We can gather from this extraordinary verse in Scripture that **Yahuah’s weeks** are to be counted from the *full* New Moon, which is always day one, and then this is followed on day two by the count of four weeks with their seventh-day Sabbaths. This is yet another scenario defining that the Sabbaths will always fall upon the 8th, 15th, 22nd, and 29th day of each lunar month. While the truth of this verse in Isaiah 66:23 has been lost in translation for hundreds, if not thousands of years, each person is compelled to face a new reality that the Creator’s weeks have NEVER cycled without end as we were all led to believe. As a result, we discover that **all the sacred set-apart days of Yahuah; His New Moon Days,**

His seventh-day Sabbaths, and His yearly Feast Days are reckoned by the *full* New Moon and NO OTHER METHOD.

While this method of reckoning the Sabbath is a newly discovered testimony from Isaiah 66:23, it does not stand alone, as there are other verses that also testify to the lunar Sabbath, such as Ezekiel 46:1-3, and Leviticus 23:1-40, as nearly all the feast days are tied to the date of the lunar month as well as the day of the week. This dual system **fixed** the feasts into a week system that by its very nature, **cannot cycle without end**. Even Genesis 1:14-16, identifies the four major units of time and connects them to the sun, moon, and stars. For the Sabbath is a sign. While the sun is not capable of identifying weeks and Sabbath signs, the moon is. It does this by first identifying the first day of each lunar month, and in this way the days and weeks are to be counted following the New Moon day. Refer to article/study on Ezekiel 46:1, *Worship at the East Gate*.

First Week & Month of Creation						New Jerusalem New Moon Day
<u>Astro-luni-solar</u>						
(Three part harmony of sun, moon and stars.)						
The constellation Bethula (Virgo) was first in order among the Mazzeroth.						
Work Day 1	Work Day 2	Work Day 3	Work Day 4	Work Day 5	Work Day 6	Sabbath
12 hour Daylight	12 hour Daylight	12 hour Daylight	12 hour Daylight	12 hour Daylight	12 hour Daylight	12 hour Daylight
2	3	4	5	6	7	8
9	10	11	12	13	14	15
16	17	18	19	20	21	22
23	24	25	26	27	28	29
30	Thus says Yahuah Alahim: "The gateway of the inner court that faces toward the east shall be shut six working days; but on the Sabbath it shall be opened, and on the day of the New Moon it shall be opened." Ezekiel 46:1 <small>Graphics by www.TheCreatorsCalendar.com</small>					

Worship Times Reckoned from the *Full* New Moon

...It [the full New Moon] shall lead all flesh to prostrate in worship, according to **My chief corner [stone]**," declares Yahuah. Isaiah 66:23

Completing **Verse 23**, the “it” was identified in the previous sentences as the *full* New Moon, and was specifically pinpointed as the *chief cornerstone* in **Verse 22**. Now we add to these realities another detail that declares the *full* New Moon as the *sign marker* in the shamayim designating when all flesh shall worship Yahuah the Most High. Here we find that indeed **the full New Moon, as the chief cornerstone, is the marker for when to worship** and that those following Yahuah’s *sign marker* are in no way worshiping the moon, but are rightly utilizing Yahuah’s time measuring tool that He ordained in the shamayim for a reference as to when to worship Him. This is precisely how modern mankind uses a calendar and a clock. No one accuses another, who attends regular weekly services or meets timely calendar appointments, as worshiping their calendar or clock. Likewise, following the *full* New Moon is Yahuah’s required time mechanism for worshiping Him on the correct New Moon Days, sacred seventh-day Sabbaths, and set-apart qodesh Feast Days.

Summary of the Evidence

From four uniquely extraordinary testimonies, the true New Moon has been identified as having dimensional symmetry and light, and is the only qualified PERFECT *chief cornerstone*. And although the whole world marches to the rhythm of a different calendar beat, Yahuah’s *chief cornerstone*, the *full* New Moon will continue to bear witness each lunar month to those of Yahuah’s eternal Kingdom. Each time the full moon rolls around it is an invitation to every humble servant of Yahuah to confess the past ignorance of the Creator’s Calendar truths, and convert to becoming adopted sons and daughters of Yahusha the Messiah, and receive the inheritance of the seed of Abraham (Galatians 3:29).

On the eighth day of the month, as counted from the *full* New Moon is the first of four monthly seventh-day Sabbaths. Yahuah declares this to be a **sign** to His obedient followers. **This is because finding the true Sabbath is only possible if we have the correct New Moon. The only folks that will find the correct New Moon are those who are seeking for it with all their hearts** (Jeremiah 29:13).

I believe it was Yahuah’s plan to allow His true New Moon to be lost all these years for the major reason that the Nation of Israel rejected Yahusha as their Messiah. But this has enabled the Most High to take what was lost and restore it for such a time as this, as His time honored testing truth. For TRUTH is a revealer of the heart.

We have learned that the *chief cornerstone* was the term applied to **both** the Messiah and His true full New Moon. So when one is rejected so is the other by default. As we approach the end of all things, if we are seeking to be part of His Kingdom, we must recognize our need to accept His visible sign in the shamayim as our guide for when to

worship the Almighty Father. For this appears to be His final test for those seeking an eternal home with Him.

The mere fact that the true New Moon is being revealed after being lost for so long is a sign that Yahusha the Messiah will be returning for His obedient followers sooner than we may realize. My prayer is that as you seek truth with all of your heart, you will both recognize it and embrace it in preparation for an eternal home with Him

Two Reasons Why People Change

Some people only change when they are forced to do so. They're like the guy who was always in trouble with the law. Being Catholic, He went to confession and told the priest, "I'm changing my ways, father."

The priest said, "*Have you finally seen the light, my son?*"

"No father. I have felt the heat."

There are two reasons why people change--they either feel the heat or see the light. Feeling the heat forces us to change. Seeing the light inspires us to change. But in reality, when the heat of the final judgment does occur it will be too late to see the light.

1. Twelve fatal errors were found in the KJV translation of Isaiah 66:22-23 that were designed to cover-up seven vital truths of the Creator's Calendar.
2. The ***Lunar-Astro-Line Time*** perspective from earth has been lost, but now reclaimed. From earth at night the *full* New Moon and starry constellation alone are visible to mark the beginning of each New Year and New Month. The sun has no part in Yahuah's Year and Month designation. This was the first of four *full* New Moon identifiers.
3. The ***Lunar-Solar-Line Time*** is 180 degrees opposite of the Creator's recorded and required method of marking His New Year and New Month. This is the time measuring system *all the world wonders after*.
4. Any time measuring system that utilizes the ***Solar-Line Time***, as viewed from earth through the sun against the backdrop of the stars on the opposite side of universe *during daylight* is in rebellion to the Creator, the Tanakh (OT), and the Renewed Covenant (NT).
5. The modern day constellation of Pisces sits in the preeminent position as the ancient pagan fish *god Dagon*, and as a result cannot be the symbol and starry designation for Yahuah's first month of the Year. This is because

Israel's calendar at the time of the prophet Samuel was not in sync with their pagan neighbors. (Read the story of Dagon in 1 Samuel 5:1-8)

6. The New Moon that was established at creation and was set in a specific order was-is the **full moon**. Proverbs 4:18 shows that while the moon shines more and more as it waxes with increased light, when it reaches its fullness, it is referred to as the **perfect day**. This was the second of four *full* New Moon markers.
7. The *full* New Moon is the only lunar phase that is witnessed precisely the same in both the Northern and Southern Hemispheres on the same night. **All other lunar phases are either opposites or not visible.**
8. The requirements for the *chief cornerstone* of the sacred Temple or any other municipal structure, is that it must be fully visible and perfectly symmetrical. This was the third witness for the full New Moon.
9. It was the *full* New Moon that was appointed as the *chief corner stone* of TIME, by the Creator, Yahuah Alahim and NOT THE SUN.
10. The *full* New Moon establishes who Yahuah's obedient true followers and their descendants are.
11. "*From ITS ABUNDANCE, New Moon by New Moon you shall keep,*" identifies the New Moon lunar phase as FULL. This is the fourth witness in these verses that the full moon is the true New Moon.
12. "*From ITS ABUNDANCE, Sabbath by Sabbath you shall keep,*" identifies that the Sabbaths were designed to be counted from the *full* New Moon each lunar month, and were never intended to cycle without end.
13. This *full* New Moon shall lead all flesh to prostrate in worship to Yahuah, fulfilling its role as the **CHIEF CORNERSTONE OF TIME**.
14. The *full* New Moon Day is a calendar marker of when to worship, and a sign of obedience to the Eternal Yahuah. It is never a sign of worshipping the moon.

Kerrie L. French

Freelance Writer/Illustrator

TheCreatorsCalendar@wildblue.net

This document was created with Win2PDF available at <http://www.win2pdf.com>.
The unregistered version of Win2PDF is for evaluation or non-commercial use only.
This page will not be added after purchasing Win2PDF.